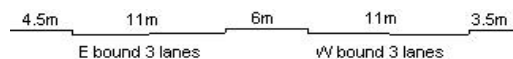


YEAR 2020

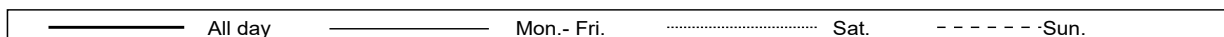
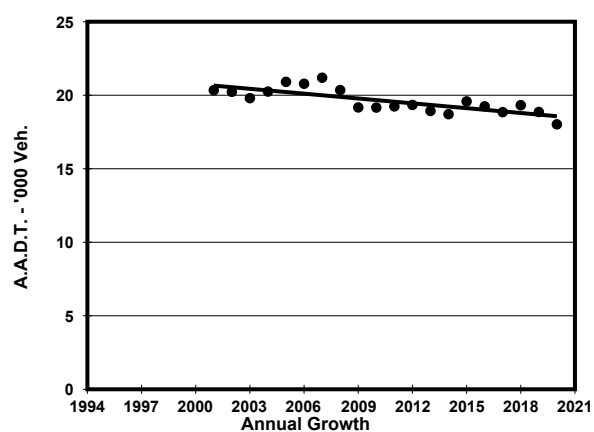
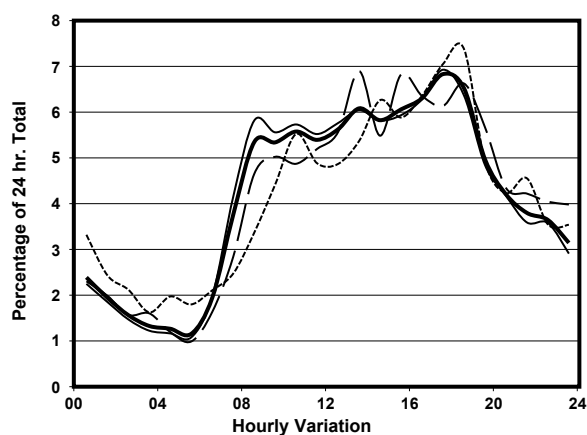
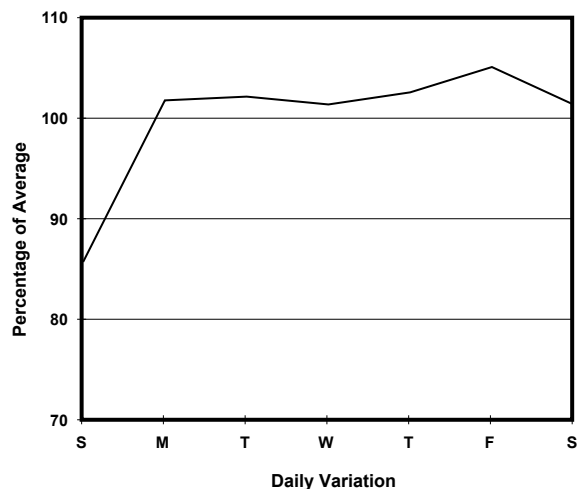
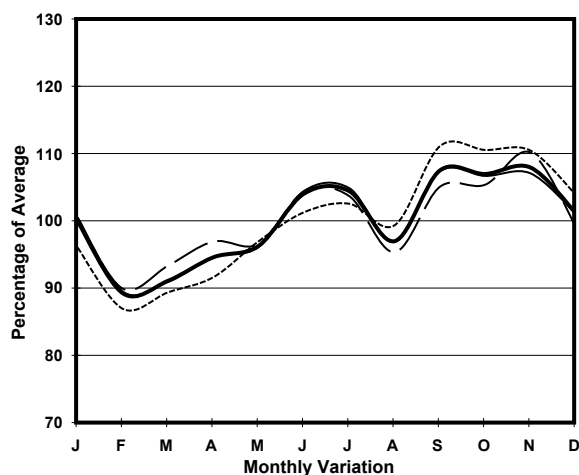
LINK TONKIN ST (from CHEUNG SHA WAN RD to UN CHAU ST)

CORE STATION
ROAD NETWORK
ROAD TYPE

3017
MAJOR
DISTRICT DISTRIBUTOR



1. TRAFFIC FLOW VARIATION AND GROWTH



2. TRAFFIC CHARACTERISTICS (BY DIRECTION)

Parameter	All - Day	Mon. - Fri.	Sat.	Sun.
EAST BOUND				
A.A.D.T.	9510	9710	9960	8560
R 12 / 24 - %	67.9	69	66.2	63.5
R 16 / 24 - %	84.3	85	84.7	79.7
AM Peak Hour	0900-1000	0900-1000	0900-1000	0900-1000
One-way flow at AM peak hour	500	520	520	410
T - % (AM)	-	-	-	-
PM Peak Hour	1800-1900	1700-1800	1800-1900	1800-1900
One-way flow at PM peak hour	650	680	660	690
T - % (PM)	-	-	-	-
Prop.of commercial vehicles - 16 hr.	-	-	-	-
WEST BOUND				
A.A.D.T.	8510	8930	8430	6960
R 12 / 24 - %	69.5	70.9	66.8	64.3
R 16 / 24 - %	86.4	87.2	84.8	82.8
AM Peak Hour	0800-0900	0800-0900	0800-0900	0900-1000
One-way flow at AM peak hour	530	600	450	280
T - % (AM)	-	-	-	-
PM Peak Hour	1700-1800	1700-1800	1800-1900	1700-1800
One-way flow at PM peak hour	580	610	560	510
T - % (PM)	-	-	-	-
Prop.of commercial vehicles - 16 hr.	-	-	-	-

3. OTHER INFORMATION AND COMMENT